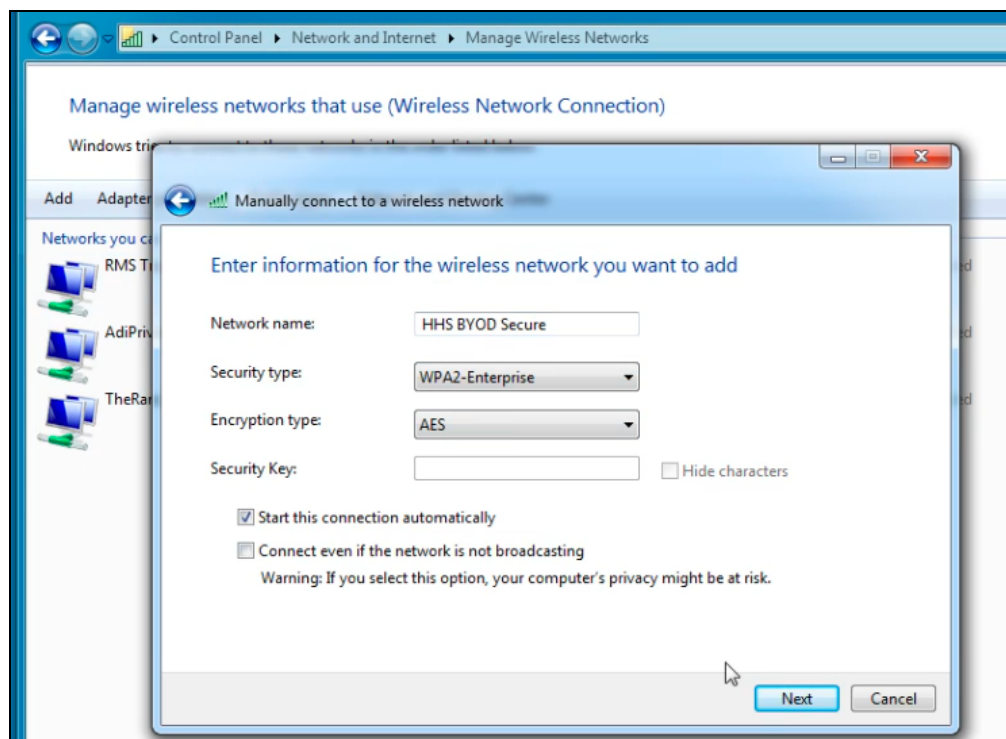


There are two wireless networking options provided for students who bring their own laptops, smartphones, etc. to school. Our recommendation is that you try "HHS BYOD Secure" FIRST, because if it works, you will only have to log in one time and your device will remember the settings. However, not all devices are compatible with the enterprise-grade security settings on that network, so if HHS BYOD Secure does NOT work for you, you can instead connect to "HHS Wireless" which is more compatible, but which requires you to re-authenticate each time your device turns off or goes to sleep. Read on...

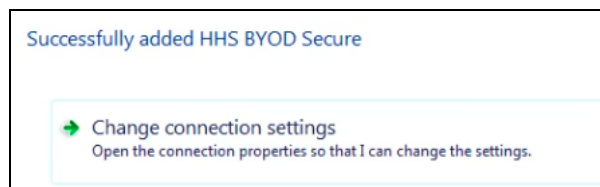
Connecting a Windows PC to the HHS wireless network:

These instructions were developed using Windows 7 Professional. If you are using a different version of Windows, you may find that certain screens and text look different, but the basic functionality should still be there. If these steps do not work for your computer, then you are on your own, or you must use HHS Wireless instead.

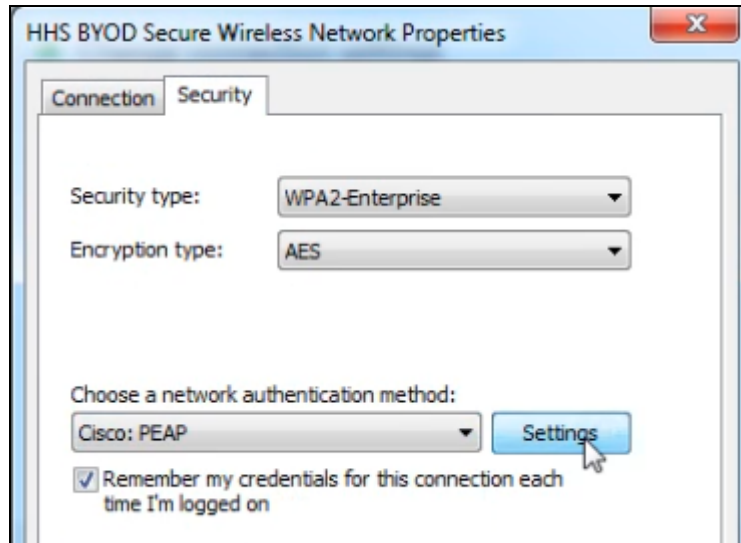
1. Go to Control Panel -- Network and Internet -- Manage Wireless Networks.
2. Click **Add**
3. For the network name, type EXACTLY **HHS BYOD Secure**
4. For Security type, choose **WPA2-Enterprise**
5. For Encryption type, choose **AES**
6. Leave the Security Key blank.
7. Click **Next**.



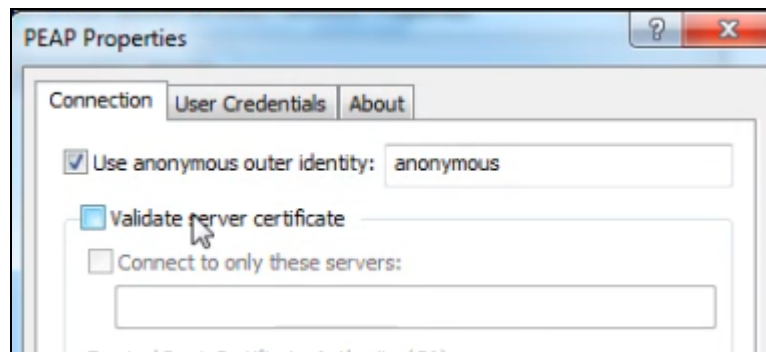
8. It should say "Successfully added HHS BYOD Secure." Click **Change connection settings**.



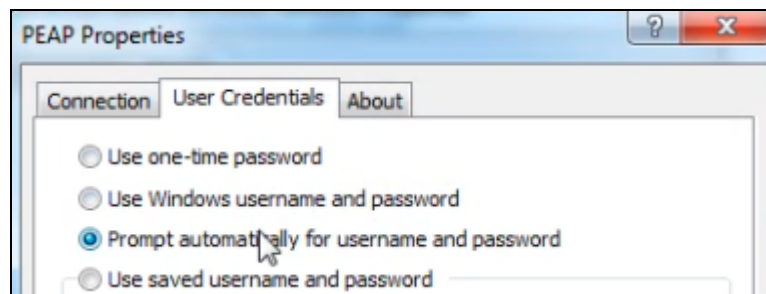
9. Click the **Security** tab.
10. Where it says "Choose a network authentication method", choose **Cisco: PEAP** or just **PEAP**
11. Then click the **Settings** button.



12. Click the **Connection** tab of the PEAP Properties window and UNcheck the box to "Validate server certificate."



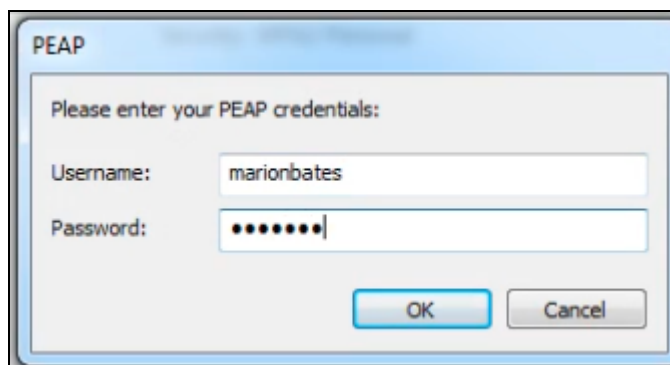
13. Click the **User Credentials** tab and select the option to **Prompt automatically for username and password**.



- 14. Click OK until all changes are saved and all windows are closed.
- 15. From the wireless networks tray icon, select **Connect** to HHS BYOD Secure.



- 16. It should say "Additional logon information is required" and pop up a window to enter your username and password. Use the same ones you use to log in to school lab machines etc.



For further clarification, please watch this video: <http://goo.gl/9CUHD>